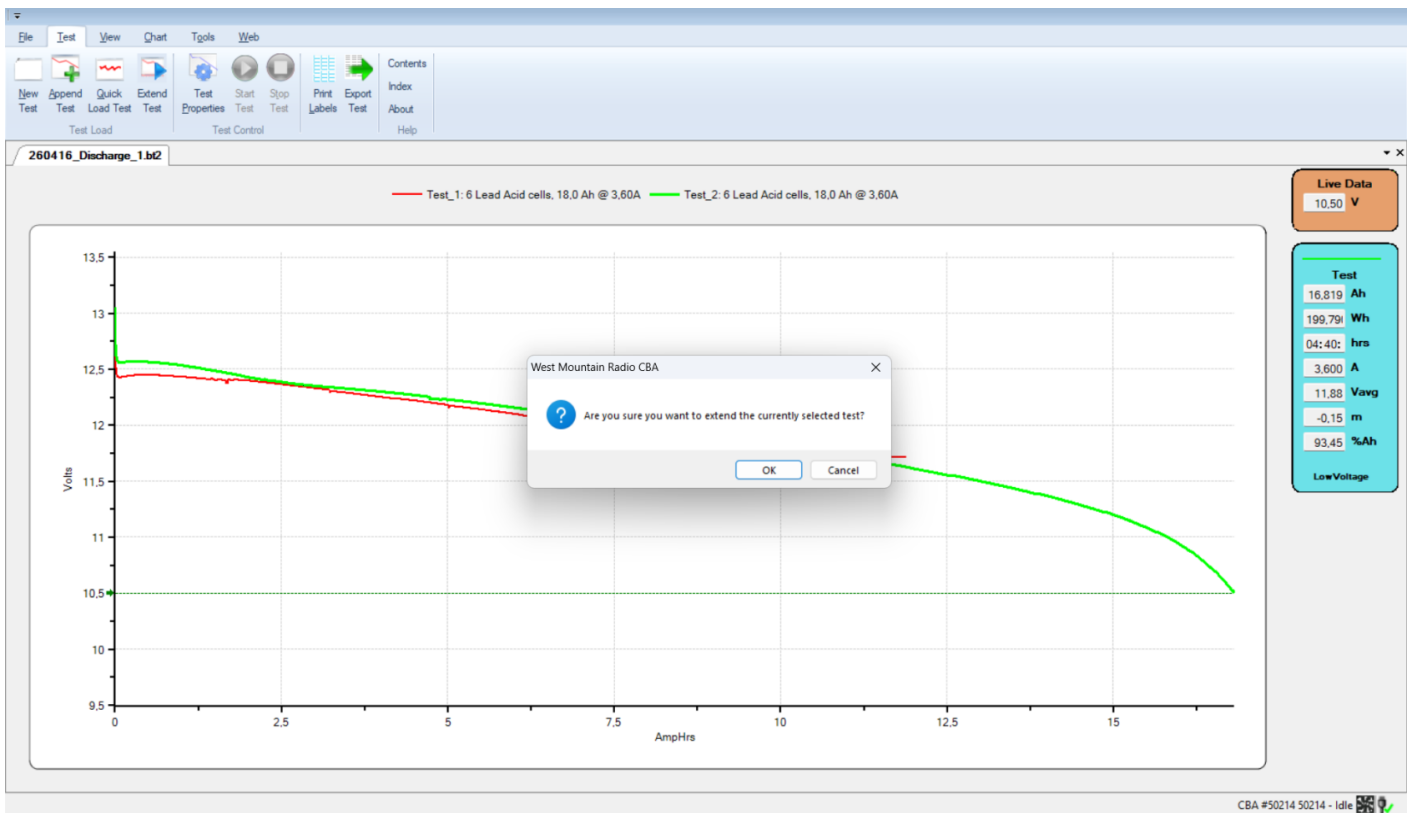


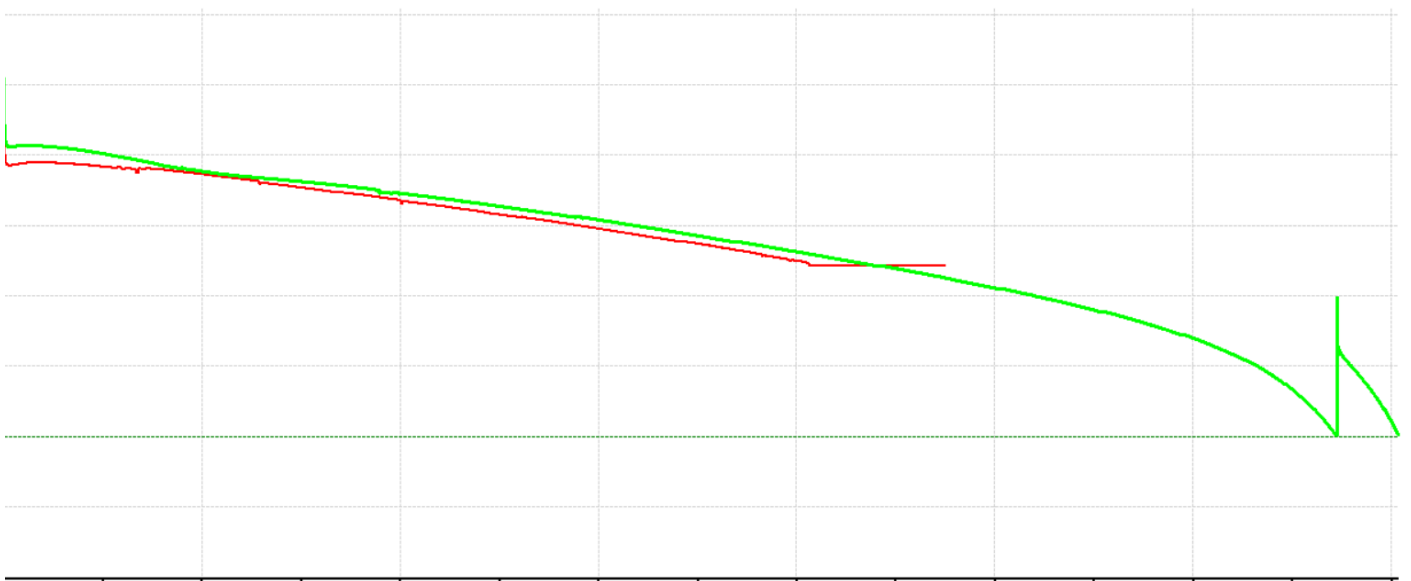
How to extend a test

Step 1



once you click on extend test this square will pop up you can click ok or cancel

once you click ok the cba will re read the voltage an a line will just pop straight up and you will slowly see the grenn line start moving again



and this is how it will look like the graph at the end of the test

Revision #3

Created 18 April 2026 19:42:39 by titipo2011

Updated 18 April 2026 20:40:45 by titipo2011