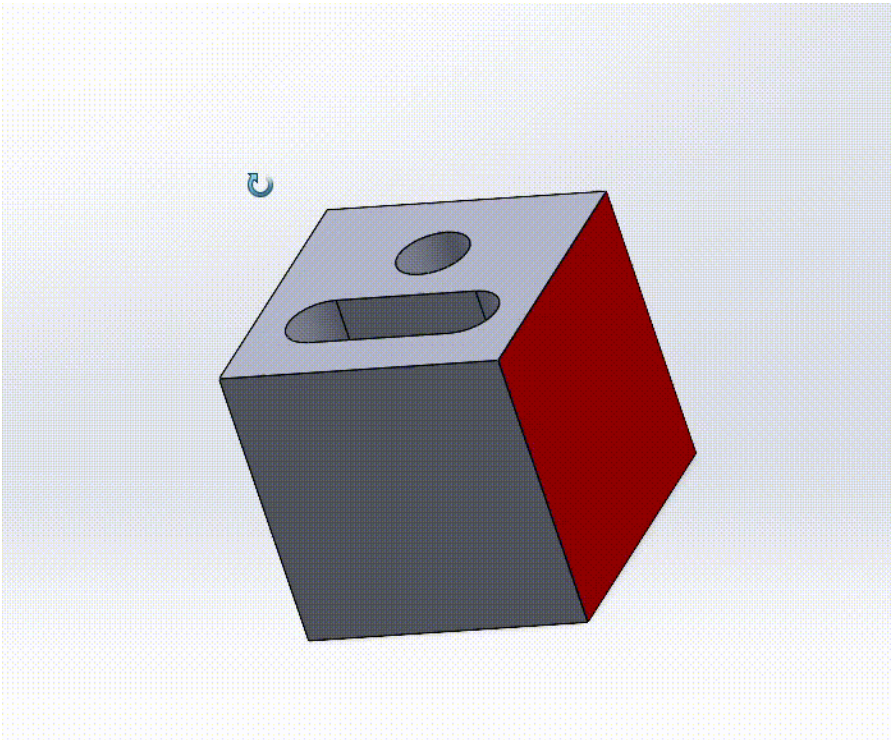


Different types of measurement

There are **3** different ways to measure with calipers.

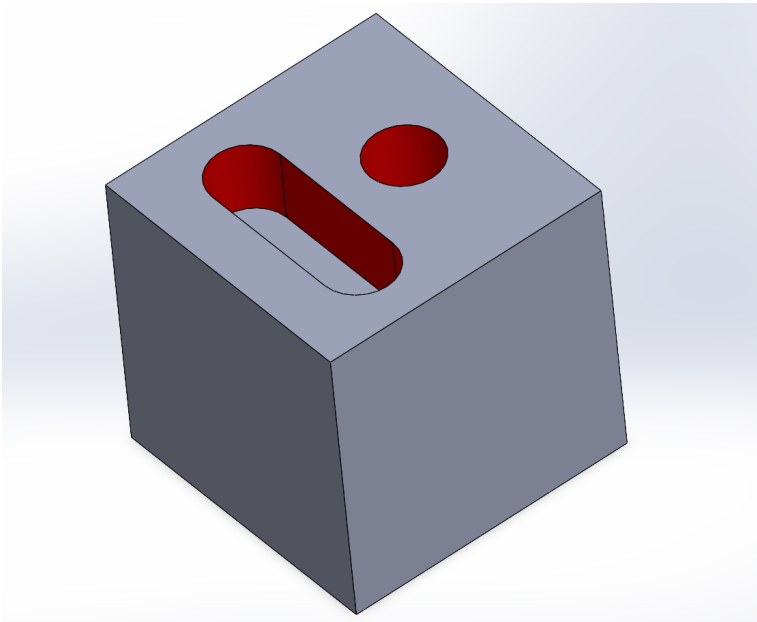
1. Measuring the external dimension of a part. To do this clamp on the outside using the external measuring jaws.

EX: Measuring the side lengths of a cube.



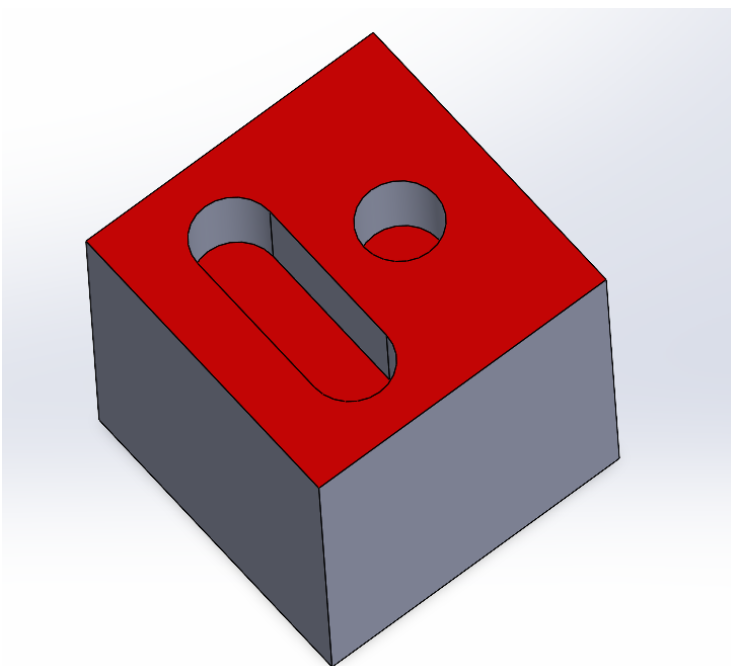
2. Measuring the internal dimension of a part. To do this clamp on the inside using the internal measuring jaws.

EX: Measuring the slot width or diameter of a circle in a part to confirm tolerances.



3.Measuring the depth of a part. To do this use the depth gauge at the end of the calipers.

EX: Measuring to the bottom of a threaded hole to pick out the right sized bolt.



Revision #9

Created 11 June 2026 23:33:59 by eharis

Updated 24 June 2026 23:32:47 by eharis